

EARLY CHILDHOOD NETWORK NEWS

== VERMILION PARISH EARLY CHILDHOOD NETWORK ==

SUMMER 2022 EDITION



VERMILION PARISH
EARLY CHILDHOOD
network

MEET OUR STAFF



MRS. LOLA V. THOMAS

Facebook

Early Childhood Supervisor

220 South Jefferson Street, A...

lola.vallairethomas@vpsb.net

337-740-5905

vermillionchildhoodnetwork.co...



MICHELLE HUNT

Facebook

Early Childhood Clerk

* Contracted through B3 Preschool Development Grant and Ready Start Network funding

220 South Jefferson Street, A...

michelle.hunt@vpsb.net

337-740-5929

vermillionchildhoodnetwork.co...



DELIA GIROUARD

Facebook

Early Childhood Facilitator

220 South Jefferson Street, A...

delia.girouard@vpsb.net

337-898-5750

vermillionchildhoodnetwork.co...



AMANDA CAMPBELL

Facebook

Childcare Literacy Coach

* contracted through Super App funding

220 South Jefferson Street, A...

amanda.campbell@vpsb.net

337-740-5929

vermillionchildhoodnetwork.co...



CHAUNTEL CLARK

Facebook

Childcare Literacy Coach

* contracted through Super App funding

220 South Jefferson Street, A...

chaunteal.clark@vpsb.net

337-740-5929

vermilionchildhoodnetwork.co...

PARTNERS IN THE VP EARLY CHILDHOOD NETWORK

Early Childhood Community Network

A+

201 Catalon Ave
Maurice, LA 70555
337-893-7887
Phyllis Johnson, Director
phyljohn67@gmail.com
Courtney Heenan, Director

A+ Too

105 Catalon Ave
Maurice, LA 70555
337-893-7887
Phyllis Johnson, Director
phyljohn67@gmail.com
Courtney Heenan, Director

Bright Beginnings

1312 Charity Street
Abbeville, LA 70510
337-893-2600
Sarah Thibodeaux, Director
brightbeginnings61@gmail.com
Tracie Robinson, Assistant Director
bbicassistant@gmail.com

Kiddle Land Learning Center

900 Wildcat Drive
Abbeville, LA 70510
337-893-0311
Holly Trahan, Director
kiddleland@gmail.com

Li'l Bucks and Does

12219 W LA HWY 92
Maurice, LA 70555
337-893-7483
Elizabeth Duhan, Director
lduhan67@hotmail.com
Mallory Broussard, Assistant Director

Little Scholars

4402 Ryan Road
Abbeville, LA 70510
337-918-6221
Lenita Turner, Director
littlescholarsla@gmail.com

Mommy's Helping Hand

108 South Lyman Street
Abbeville, LA 70510
337-385-2931
Bernadette Broussard, Director
bernadette daycare@yahoo.com

Mommy's Helping Hand, Inc Too

503 N Trahan
Kaplan, LA 70548
337-643-1380
Bernadette Broussard, Director
bernadette daycare@yahoo.com

Next Generation

1919 Charity Street
Abbeville, LA 70510
337-893-1619
Blaine Trahan, Director
kiddleland@gmail.com

Sam's Kid Safari Learning Academy

27261 Rodeo Drive
Abbeville, LA 70510
337-422-5227
Samantha January, Director
pam.january@aol.com
Dominique Hawthorne, Assistant Director
hawthornedom@gmail.com
Jessica Polk
jam_polk@gmail.com

Early Head Start

United Way of Acadiana-Abbeville Early Learning Center
802 South St Valerie Street
Abbeville, LA 70510
337-385-2565
Tiffany Comeaux, Abbeville Director
tiffany.comeaux@unitedwayofacadiana.org
Annette Victor, Lafayette Director
annettevictor@unitedwayofacadiana.org

Head Start

Prudence Moments, Country Bears, Honey Bears, Little Bees
Contact Address
1600 North State Street
Abbeville, LA 70510
337-893-2528
Almetra Franklin, Chief Administrator
Amanda Caffery, Assistant Director
akcaffery@gmail.com



The Louisiana Department of Education has been piloting a Family Child Care program to offer a larger variety of childcare options. The Vermilion Parish Early Childhood Network welcomes these new partners into our network. We would like to officially welcome Mrs. Tonia Bolden, who recently received her academic approval, to be a part of our network! We are looking forward to working with Mrs. Tonia to provide quality childcare options to the families in Vermilion Parish. We will soon be adding Mrs. Tonia's information to our Network Partners contact page and website.

LEARN MORE ABOUT OUR PARTNERS



Partners | Vermilion Parish Early Childhood Network www.vermilionchildhoodnetwork.com

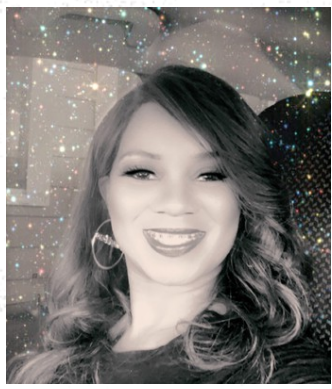
We have dozens of partners to help the future of childcare in Vermilion. Vermilion Parish Early Childhood Network is here to service the children of Vermilion Parish.

2022 EARLY CHILDHOOD NETWORK BLUEPRINT

VERMILION PARISH EARLY CHILDHOOD ADVISORY COUNCIL

The first official meeting of the 2022-23 school year will be Tuesday, August 16th. The meeting will include a review of the 22-23 Meeting Calendar, B-3 Monitoring Report and Fundraising

Plan for 2022-2023. The Early Childhood Budget will also be presented for approval. The next council meeting will be Thursday September 15, 2022.



**FELICIA
BUSHNELL**

President



**ANGELA
GODWIN**

Vice President



**MARCELO
DAVIS**

Treasurer

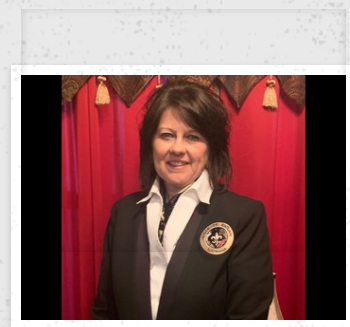


**MALEKA
BROUSSARD**

Secretary



**LENITA
TURNER**



**MELISSA
GUIDRY**



**AMANDA
CLARK**

*not pictured

VERMILION PARISH EARLY CHILDHOOD ADVISORY COUNCIL MEETING

WHEN

TUESDAY, AUG. 16TH 2022 AT 5PM

WHERE

THIS IS AN ONLINE EVENT.

MORE INFORMATION

Google Meet joining info

Video call link: <https://meet.google.com/wdi-ggvs-wvf>

Or dial: (US) +1 502-430-2862 PIN: 478 898 450#

JOIN OUR COALITION!

We need community volunteers to help us with future informational and fundraising campaigns.

Consider joining today!

NETWORK PROGRAM UPDATES

B-3 GRANT

Type III centers participating in the Birth-3 grant are currently enrolling children for the 2022-2023 fiscal year. We've moved from paper applications to an online platform via SchoolMint and currently have over 200 applications for our program. Interested families can contact the

Type III childcare center to see if they have any spots available and then log on to SchoolMint from our website to apply. (<https://www.vermilionchildhoodnetwork.com/copy-of-documents>)

NETWORK EXPANSION GRANT (CSBAE)

Our strategic plan has been finalized and we are moving into the action phase of the grant. Directors will be receiving the items they need so more childcare seats are available at their sites. We are excited for our partners to receive the items they need to increase access to childcare in Vermilion Parish!

PUBLIC SCHOOL PRE-K 4 (LA4, 8G, AND TITLE I FUNDING)

We have successfully completed the 2021-2022 school year! Our teachers are currently out for summer break. Many teachers are busy preparing their classrooms for the 2022-2023 school year.

The beginning of the year professional development will occur on August 4th at J.H. Williams Middle School. Topics for teachers will include updates to program guidelines, collaborative sessions on assessment and the Creative Curriculum Cloud for lesson planning, and behavioral strategies for students with challenging behaviors.

PROFESSIONAL DEVELOPMENT

All teachers and staff across the network are busy with professional development for the upcoming year.

1. Childcare teachers are beginning Early Childhood LETRS training to learn more behind the science of literacy instruction. Implementing the knowledge gained by the teachers will support students' foundational skills for reading.
2. PreK and Childcare teachers are also continuing with coaching through Teachstone. A trained coach offers recommended resources based upon the teacher's CLASS observation scores. This provides the teacher with professional learning based upon their previous experiences in their own classroom.
3. PreK Teachers attended district-wide professional development on August 4th. They received information about early literacy, developmental screeners, and updates to the TS Gold platform and use of the Creative Curriculum Cloud.

UPCOMING DATES

August 8- Mommy's Helping Hand, Inc Too opening

August 11-12, 15- ASQ3 Developmental Screening for Public School PK students

August 16th @ 5:00 pm-VP Early Childhood Council Meeting

August 16 Public School PK Students begin

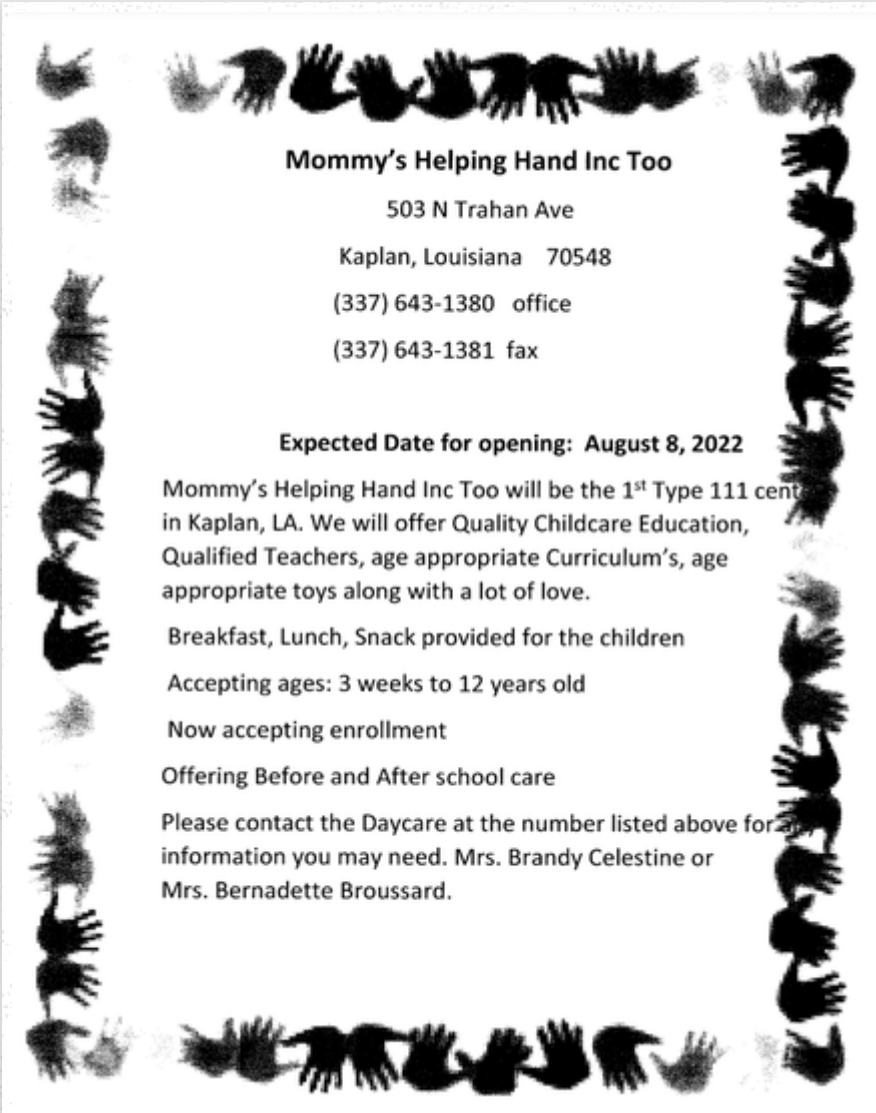
September 15th @ 5:00 pm-Early Childhood Council Meeting

October 13th @ 5:00 pm-Early Childhood Council Meeting

November 10th @ 5:00 pm- Early Childhood Council Meeting

December 15th @ 5:00 pm- Early Childhood Council Meeting

EVENTS AND ANNOUNCEMENTS



Mommy's Helping Hand Inc Too
503 N Trahan Ave
Kaplan, Louisiana 70548
(337) 643-1380 office
(337) 643-1381 fax

Expected Date for opening: August 8, 2022

Mommy's Helping Hand Inc Too will be the 1st Type 111 center in Kaplan, LA. We will offer Quality Childcare Education, Qualified Teachers, age appropriate Curriculum's, age appropriate toys along with a lot of love.

Breakfast, Lunch, Snack provided for the children

Accepting ages: 3 weeks to 12 years old

Now accepting enrollment

Offering Before and After school care

Please contact the Daycare at the number listed above for any information you may need. Mrs. Brandy Celestine or Mrs. Bernadette Broussard.

AFTER SCHOOL PROGRAMS

301 A.A. Comeaux Memorial Dr. Abbeville, LA 70510



SCAN FOR MORE INFORMATION!

FREE TRANSPORTATION TO THE CLUB FROM
EATON PARK AND HEROD ELEMENTARY

- ✓ Homework Help
- ✓ Sports & Recreation
- ✓ Arts & Crafts

CONTACT US

Brian Ford

bford@bgcacadiana.com

337.898.9745

www.bgcacadiana.com

FACEBOOK: VERMILION CLUB OF BGCA

AGES

6 - 18

HOURS

3:00PM - 7:00PM

Monday - Thursday

3:00PM - 6:00PM

Friday



ST. MARY/VERMILION

CAA HEAD START/EARLY HEAD START

WE ARE ACCEPTING APPLICATIONS FOR BOTH OF
EARLY HEAD START PROGRAM AND HEAD START
PROGRAM

SNAP recipients categorically Eligible for Head Start

For our Early Head Start Program
children must be 2 years old on or before
September 30th

For our Head Start Program children must
be 3 years old on or before September
30th

PLEASE BE SURE TO BRING:

- Child's Social Security Card
- Birth Certificate
- Immunization Record
- Proof of Disability
- Proof of Income
(W2 or TANF printout)
- Medical/Insurance Card
- Physical and Dental Exam

Almetra J. Franklin
CEO/Head Start Administrator
1407 Barrow Street
Franklin, LA 70538

Head Start actively recruits children with
disabilities. Head Start provides an
inclusive learning environment. Ten
percent of enrollment will be made
available to children with disabilities.

Head Start provides a safe and
high-quality learning environment

FOR MORE INFORMATION PLEASE CALL

**ST. MARY PARISH FAMILY
SERVICES**
(337) 828-5703
**VERMILION PARISH
FAMILY SERVICES**
(337) 893-2528

ST. MARY COMMUNITY ACTION IS AN EQUAL OPPORTUNITY
EMPLOYER, PROVIDER, & LENDER

CHECK US OUT ON FACEBOOK!



VERMILION PARISH
EARLY CHILDHOOD
network

220 S. Jefferson St. | Abbeville, La 70510



vermilioneccnetwork@gmail.com



337-740-5929



www.vermilionchildhoodnetwork.com

VISIT OUR YOUTUBE CHANNEL!